

# EZ·INLAYS



Memorable Crafting Experiences

## Crafting Tools and Supplies



- Plunge Router
- Brass Inlay Kit
- R/O Sander
- Clamps
- Shop Vac



- Chisel
- Mallet
- Paint Scraper
- Small Pics
- Scissors



- Wood
- Glue
- Double Sided Tape
- Sandpaper
- Finish (Tung Oil)

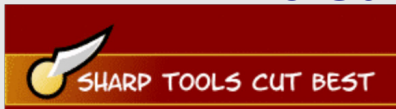
## TOOL LIST



Learn more at: <http://www.EZInlays.com/Tutorials.html>

## Two Guidelines for Building

### Rule 1:



Use a SHARP carbide tipped  
1/8" spiral downcut bit

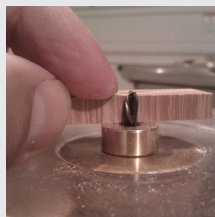
### Rule 2:

Nothing but the router moves!!!

Tape exotic wood to backing material  
Tape template to inlay material  
Secure assembly to workbench

## Cutting Inlays

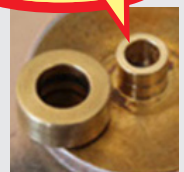
Adjust depth of cut  
to be **slightly deeper**  
than thickness of the  
material



## BUSHING OFF

- Position collar against template wall, turn router on
- Plunge bit to its lowest point
- Guide router, clockwise, around the shape
- Keep collar in constant contact with template wall while routing

Collar



## Cutting Voids

Adjust depth of  
cut to be **slightly shallower**  
than  
thickness of the  
material



## BUSHING ON

- Position bushing against template wall, turn router on
- Plunge bit to its lowest point
- Cut around edge of shape, move router back and forth until all material is removed creating a void

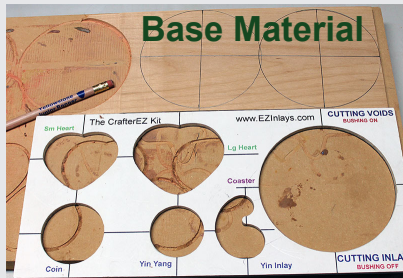
Bushing





## Building the Dog Paws Coaster

- 1** Mark coaster outlines and alignment marks on the **Base Material**.



- 3** Use the **RED** alignment mark to position the L1 pads. Use the **GREEN** alignment mark to position the L3 pads.

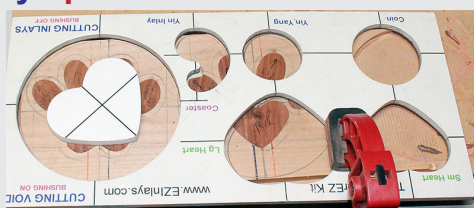


- 5** Align and tape the template to the inlay material and cut all inlays using the **Cutting Inlays** procedure. Mark orientation and label each inlay piece.

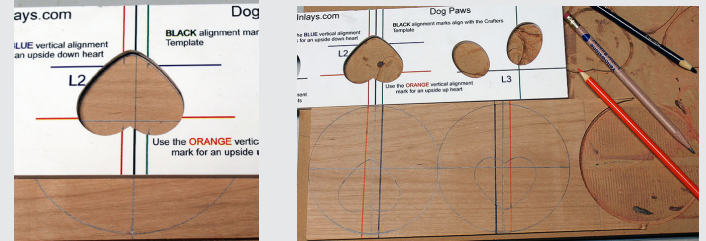


- 7** Align & tape the CrafterEZ template to **Base Material**. Cut coaster using **Cutting Inlays** procedure.

The Heart is used to stabilize the router base



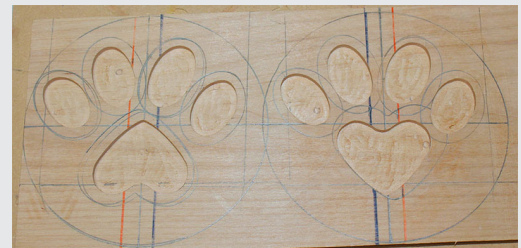
- 2** Add the other two alignment marks to the **Base Material**. These lines are used to place the L1 and L3 Paw Pads.



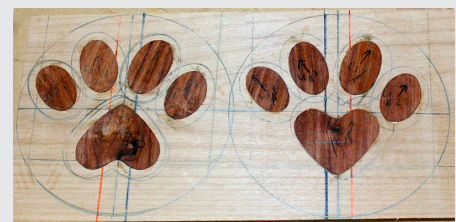
- If making an upside down heart use the **BLACK** vertical alignment mark. If making an upside up heart use the **ORANGE** vertical Alignment mark.

- 4** Align & tape the template to **Base Material**. Cut each void using **Cutting Voids** procedure.

**\*\*\* NOTE \*\*\*** If making an upside up heart shift the template down 1/4 inch and to the left by 1/2 inch!



- 6** Assemble the inlays into their void



- 8** Fill any gaps with glue and sand. Finish as desired. We recommend 4 coats of Tung Oil and then a couple of coats with a good Polyurethane finish that has UV protection.

